



SpeedTools™ Utilities



For MacOS X

User's Guide



© 2004 Intech Software Corporation

Document Revision: 1.1

License Agreement

For One Computer

READ THE FOLLOWING SOFTWARE LICENSE AGREEMENT ("LICENSE") CAREFULLY, BEFORE YOU USE THE ACCOMPANYING SOFTWARE. BY INSTALLING OR USING THE SOFTWARE OR ANY OF THE MATERIALS ENCLOSED, YOU ARE AGREEING TO BE BOUND BY THE TERMS OF THIS LICENSE. IF YOU DO NOT WISH TO AGREE TO THE TERMS OF THIS LICENSE, (IF APPLICABLE) PROMPTLY RETURN THE UNUSED SOFTWARE TO THE PLACE WHERE YOU OBTAINED IT FOR A REFUND.

1. License. The software and documentation accompanying this License, known as the SpeedTools™ Utilities (Software), whether on disk, in read-only memory, or contained on any other media and the related documentation are licensed to you by Intech Software Corporation (Intech) and its Licensor(s). You own the disk on which the Software is recorded, but Intech retains title to the Software and related documentation. This license allows you to use the Software on a single computer and make one copy of the Software retained by you for backup purposes only. You may transfer your license rights of the Software and related documentation, the Software backup copy which you may have made, and a copy of this license to another person, provided the other person agrees to accept the terms of this license after reading its complete text and conditions.

2. Restrictions. You may not, in whole or part, copy, photocopy, reproduce, translate, reverse compile, disassemble, reverse engineer, reduce to any electronic or machine-readable form, or otherwise reduce to a human perceivable form (except for a backup copy, as stated in paragraph 1), the Software or related documentation without the prior written consent of Intech. You may not change, rent, lease, loan, distribute or create derivative works based upon the Software in any form, in whole or in part. This prohibition includes transmission of the Software over a network from one computer to another. THIS SOFTWARE IS NOT INTENDED FOR USE IN THE OPERATION OF NUCLEAR FACILITIES, AIRCRAFT NAVIGATION, COMMUNICATION SYSTEMS, OR AIR TRAFFIC CONTROL MACHINES IN WHICH CASE THE FAILURE OF THE SOFTWARE COULD LEAD TO DEATH, PERSONAL INJURY, OR SEVERE PHYSICAL OR ENVIRONMENTAL DAMAGE. Your rights under this License will terminate automatically without notice if you fail to comply with any term(s) of this License.

3. Service or Support. By using the Software and agreeing to this license, you understand and agree that Intech may not offer you any technical support regarding use of the Software or related products. Intech reserves the right to revise the Software and documentation without obligation to notify any person or organization of any such changes or revisions.

4. Warranty Disclaimer. By using the Software and agreeing to this license, you expressly acknowledge and agree that use of the Software is at your sole risk. The Software and related documentation are provided "AS IS" and without warranty of any kind. INTECH EXPRESSLY DISCLAIMS ALL WARRANTIES, EXPRESSED OR IMPLIED, INCLUDING, BUT NOT LIMITED TO, THE IMPLIED WARRANTIES OF MERCHANTABILITY AND FITNESS FOR A PARTICULAR PURPOSE. INTECH DOES NOT WARRANT THAT THE FUNCTIONS CONTAINED IN THE SOFTWARE WILL MEET YOUR REQUIREMENTS, OR THAT THE OPERATION OF THE SOFTWARE WILL BE UNINTERRUPTED OR ERROR-FREE, OR THAT DEFECTS IN THE SOFTWARE OR RELATED DOCUMENTATION WILL BE CORRECTED. NO ORAL OR WRITTEN STATEMENTS OR INFORMATION OR ADVICE PROVIDED BY A INTECH REPRESENTATIVE SHALL ESTABLISH A WARRANTY OR EXPAND THE SCOPE OR TERMS OF THIS WARRANTY. IF THE SOFTWARE IS

DEFECTIVE, YOU WILL BE RESPONSIBLE FOR THE COST OF ALL NECESSARY SERVICING, REPAIRS, OR CORRECTIONS. Some jurisdictions do not allow for exclusion of implied warranties, so the above exclusion may not apply to you. The Software may not work properly with modified versions of your computers operating system, certain resident software applications, or hardware that is not 100% compatible with that provided by the computers manufacturer.

5. Limited Warranty Regarding Media. Intech warrants that the diskette(s) on which the Software are recorded shall be free from defects in materials and workmanship under normal use for a period of ninety (90) days from the date of your purchase of the Software, as established by your receipt. Intech's entire liability, as well as your sole and exclusive remedy, will be replacement of the diskette(s) which are defective. The diskette(s) must be returned to Intech with a copy of your receipt. This warranty does not include diskette(s) damaged by accident, abuse, or misapplication. ANY IMPLIED WARRANTIES ON THE DISKETTE(S) ARE LIMITED TO A PERIOD OF NINETY (90) DAYS FROM THE DATE OF DELIVERY TO YOU. THIS LIMITATION INCLUDES IMPLIED WARRANTIES SUCH AS THE IMPLIED WARRANTIES OF MERCHANTABILITY AND FITNESS FOR A PARTICULAR PURPOSE. This warranty gives you specific legal rights, and you may also have other rights which vary from state to state.

6. Limitation on Liability. IN NO EVENT WILL INTECH BE LIABLE TO YOU FOR DIRECT, INDIRECT, SPECIAL, INCIDENTAL, OR CONSEQUENTIAL DAMAGES ARISING FROM YOUR USE OR INABILITY TO USE THE SOFTWARE OR RELATED DOCUMENTATION, EVEN IF INTECH HAS BEEN ADVISED OF THE POSSIBILITY OF SUCH DAMAGES. INTECH SHALL HAVE NO LIABILITY FOR ANY HARDWARE, SOFTWARE OR DATA STORED OR USED IN CONJUNCTION WITH THE SOFTWARE, INCLUDING THE COSTS OF REPAIRING, REPLACING, OR RECOVERING SUCH HARDWARE, SOFTWARE OR DATA. Under no circumstances shall Intech's total liability to you for all damages, losses, and causes of action (whether in contract, tort (including negligence) or otherwise) exceed the amount paid by you to obtain the Software and related documentation.

7. Severability. Should a court of competent jurisdiction declare this license agreement, or any portion of this license agreement, to be unenforceable, that portion shall be enforced to the maximum extent possible so as to effectuate the intent of the parties, and the remainder of the agreement shall continue in full force and effect.

8. Complete Agreement. This license constitutes the entire agreement among the parties regarding the use of the Software and related documentation. This license agreement replaces and supersedes any prior understandings or agreements, whether oral or written. No contemporaneous understandings or agreements were entered into in conjunction with this license agreement. No change to this licensing agreement will be effective against Intech unless it is in writing and signed by an authorized representative of Intech Software Corporation.

© Copyright 1994-2004 by Intech Software Corporation. All rights reserved worldwide, including those to reproduce, modify and/or distribute this document or part thereof, in any form without prior written consent from Intech Software Corporation.

Apple, the Apple Logo, Macintosh, Power Macintosh, MacOS and PowerBook are trademarks or registered trademarks of Apple Computer, Inc. CD-ROM SpeedTools, CD/DVD SpeedTools, Hard Disk SpeedTools, PeripheralView, Cache Monitor, QwikInstall, Integrity, IntegrityX, QuickBench, QuickBench Classic, QuickBenchX, DrivePC, DeviceTuner, QuickBack, S.M.A.R.T. Guard and the Intech Logo are trademarks or registered trademarks of Intech Software Corporation. All other brand and product names contained in the software and related documentation were used in an editorial fashion only and are the trademarks or registered trademarks of their respective holders.

Table of Contents

- 1 . Guide Introduction 1**
 - About this Guide 1
 - Conventions Used in this Guide 1
 - User Registration 1
 - Technical Information 1

- 2 . Using the SpeedTools Utilities 2**
 - About the SpeedTools Utilities 2
 - Using the SpeedTools Utilities Manager 3
 - Using SpeedTools Utility Components 3
 - Viewing Utility Component User’s Guides 3
 - Checking for Updated Versions & New Utility Components 3
 - The New Component Information Drawer 5
 - Manually Checking for Component Updates 6
 - Shortcuts to Important Intech Website Resources 6
 - Pre-Authenticating with the Lock Button 6
 - Using the Speedtools Dock Menu 7
 - SpeedTools System Requirements 8

- 3 . Setting SpeedTools Preferences 9**
 - About the SpeedTools Preferences 9
 - The SpeedTools Application Preference Pane 9
 - The SpeedTools Interenet Preference Pane 10
 - The SpeedTools Window Preference Pane 11



Guide Introduction

About This Guide

The instructions and explanations in this guide assume that you understand how to operate your Macintosh computer. You should, for example, know how to choose, select, launch, and drag by using your mouse. In addition, you should also understand how the desktop, windows, dialog boxes, buttons and file/folders work within the Macintosh environment. For more information about these items, please refer to your Macintosh User's Guide.

Conventions Used In This Guide



Note: This symbol calls your attention to important information about the adjacent text. A note will always appear in standard print.



Warning: This symbol calls your attention to procedures in the adjacent text which can cause harm to you, your data or computer system. A warning will always appear in bold print.

User Registration

Please take a moment to register your copy of the SpeedTools™ software on-line via the Intech Software World Wide Web page at <http://www.SpeedTools.com>.

Technical Information

If you received this software with the purchase of a drive subsystem and you require technical support, Intech has made special arrangements with your drive manufacturer to support this software directly via their technical support department. For customers who have purchased this software product as stand-alone, Intech provides technical information and other late-breaking information via its web site at <http://www.SpeedTools.com>.

2

Using the SpeedTools Utilities

About the SpeedTools Utilities

At the heart of the SpeedTools Utilities suite is the SpeedTools Manager application. A scalable utility management system which provides a single, organized access point to launch SpeedTools components, view user guides and monitor updates.



Figure 1. The SpeedTools Utilities Manager

Using the SpeedTools Utilities Manager

When the SpeedTools Utilities Manager application is started up, a list of the available SpeedTools Utility “Components” is provided in its main window. Each of these utility component items is displayed with its respective icon, short description of function, and component version information.

Using SpeedTools Utility Components



To use a utility component, click on the utility of your choice in the SpeedTools Manager window. This action will highlight the chosen utility in blue as shown in Figure 1. Next, click the “Launch” button (as shown left) which is located in the top-right of the SpeedTools Manager window. Alternatively, you may double-click a utility component or press the “Return” key to launch any selected utility component.



Note: Some utility components, when started, may require you to authenticate your identity to allow them to function properly. See “Pre-Authenticating with the Lock Button” later in this chapter for additional information about streamlining authentication requirements.

Viewing Utility Component User’s Guides



Each provided utility component has its own individual user’s guide. To access a utility’s guide, click on the utility component that you would like more information about. Next, click the “Guide” button (as shown left) which is located near the top-left of the SpeedTools Manager window. The selected guide file will be automatically presented using your system’s default PDF viewing application (in most cases, this will be Apple’s “Preview” application or Adobe’s “Acrobat” application).


Checking for Updated Versions & New Utility Components

Periodically, Intech Software Corporation releases new SpeedTools Utilities components as well as provides updates to existing components.

If you have an active internet connection, the SpeedTools Manager has been set to automatically check for new components and newer versions each time it starts up. While checking, a small drawer (shown below) will drop from the bottom of the Manager’s main window to provide you with the progress of this service. This process can be canceled at any time by clicking the “Cancel” button located right of the progress bar.



Figure 2. Checking for Updates Progress Drawer

 **Note:** Automatic update checking can be disabled if desired. See Chapter 3 “Setting SpeedTools Preferences” for more information.

If a more recent version of an existing component is detected, detailed information about the update can be accessed by clicking on the small blue "i" button at the right of the component description. See Figure 3 below.

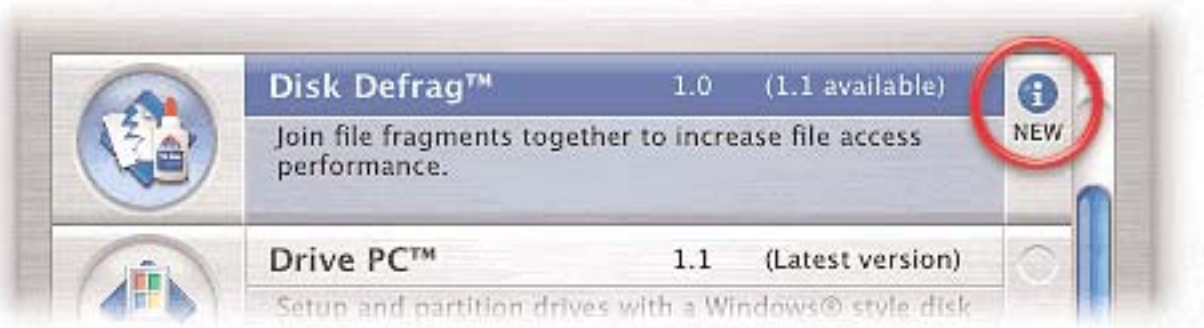


Figure 3. New Version Indicator

If a new utility component has been released which was not included with your version of the SpeedTools Utilities, an additional component item will appear at the bottom of window as shown in Figure 4.



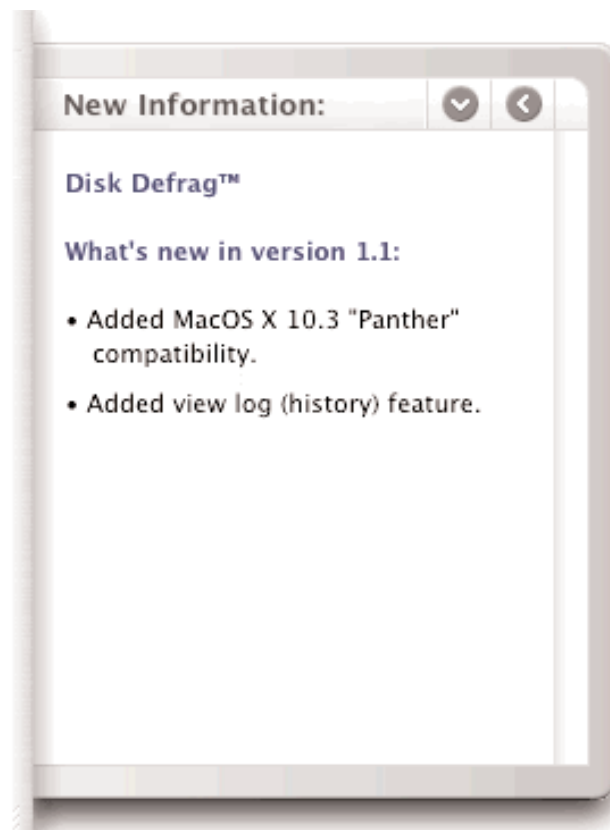
Figure 4. New Component Notification

To learn about the new item(s) available, you simply click anywhere on the “New SpeedTools Component...” list item. Clicking directly on the small blue “i” button is not necessary for new components.

The New Component Information Drawer

When you click on the “i” button for an existing component or click anywhere on a new component list item, a drawer window featuring information about the item(s) will be displayed at the right side of the SpeedTools Manager main window as shown to the right.

In this drawer, you’ll notice two arrow buttons at the top right. The left pointing arrow button will close the drawer when clicked. And, for your convenience in obtaining a new component, we’ve provided the down pointing arrow button. Clicking on this button will automatically open your preferred web browser and take you to Intech’s SpeedTools download website.



Manually Checking for Component Updates



As explained earlier in this guide, the SpeedTools Manager has been set, by default, to automatically check for updates if an active internet connection is detected. However, if you have disabled automatic checking or do not have an “active” internet connection such as a modems has not dialed out to create a live connection, the SpeedTools manager provides a way for you to establish the connection manually. This is done by clicking on the “Updates” button (shown left). For modem users with no active connection, clicking this button will automatically start the connection/dialing process. Upon successful connection to the internet, the SpeedTools Manager will begin the update checking process.

Shortcuts to Important Intech Website Resources



For your convenience, the SpeedTools Manager application provides a menu of shortcuts to key resources featured on Intech’s website. Clicking the “Web Site” button (shown left) will present the shortcut menu. When a website shortcut is selected, your default web browser will automatically open and take you to the desired Intech web location.

Pre-Authenticating with the Lock Button



Since some of the SpeedTools utility components require user authentication in order to function properly, the SpeedTools Utilities Manager provides a handy way to pre-authenticate before launching utility components, thereby removing the need to authenticate each individual component. This feature can be toggled in real time via the small lock icon (shown left) located at the extreme lower left of the main window. A “locked” button icon represents the need for utility components to individually prompt for authentication as needed. The “unlocked” button icon represents pre-authentication is active and most utility components will not require any additional authentication. (See note below for exceptions)



Pre-Authentication Exception: Certain functions within the QuickBack component cannot be pre-authenticated. Therefore, you may be prompted for additional authentication while using Quickback, depending on the backup type selected.

If you would like to further automate the pre-authentication functionality, you may set via the SpeedTools Manager Preferences to initially authenticate upon initial start up. See Chapter 3 “Setting SpeedTools Preferences” for more information.

Using the SpeedTools Dock Menu

From the first versions of MacOS X, users have embraced MacOS X’s Dock and its Dock Menus. We at Intech are no exception. For those of you have have not experienced an application which fully utilizes what Dock Menus can do, we have a treat for you. The SpeedTools Manager Dock Menu incorporates the ability to selectively launch any of the SpeedTools utility components as well as read any of their respective user’s guides. In other words, the Dock menu provides you with the power to use any SpeedTools component even if the SpeedTools Manager window is “Minimized”, has been set to “Hide” or is completely obstructed by other Finder and application windows.



Figure 5. The SpeedTools Manager Dock Menu

Because the Dock menu can effectively reduce the need to have the SpeedTools main window always visible, we've provided an option to automatically hide the main window at startup. With this option selected, you'll be able to toggle the visibility of the main window at any time directly using the Dock menu as needed. See Chapter 3 "Setting SpeedTools Preferences" for more information.

To use the SpeedTools Dock menu, click and hold on the SpeedTools Dock icon until the menu appears. Then, navigate your mouse over your menu selection and release the mouse button. To manually hide the SpeedTools main window using the Dock menu, select "Hide" located towards the bottom of the menu. To show a hidden SpeedTools window, simply click once on the SpeedTools Dock icon.



Note: The SpeedTools Manager application must be running (as indicated by a black triangle next to its Dock icon) before you will have access to launch SpeedTools utility components. If the SpeedTools Manager application is not running, a generic Dock menu allowing you to show the SpeedTools application in the Finder will be presented instead.

SpeedTools System Requirements:

The SpeedTools Manager application requires MacOS X 10.2 or later to operate. Some individual SpeedTools components may need additional system requirements. Any additional component system requirements will be listed in their respective user's guides. See "Viewing Utility Component User's Guides" earlier in this chapter for instruction on obtaining component guides.

3

Setting SpeedTools Preferences

About The SpeedTools Preferences

The behavior of the SpeedTools Utilities Manager can be changed to suit your tastes. To change any of the default behaviors of the SpeedTools Utilities Manager, select “Preferences” located in the SpeedTools Utilities Application menu (shown right). Afterwards, the first category of options will be displayed, called “Application” as shown in Figure 6.



The SpeedTools Application Preference Pane

The Application preference pane provides three options. Selecting the first option, "Quit this Application with Utility Launches" will cause the SpeedTools Utilities Manager to terminate after launching any utility component.



Figure 6. The SpeedTools “Application” Preference Pane

Selecting the second option, “Auto-Launch SpeedTools at Computer Startup”, will cause your computer to automatically launch the SpeedTools Utilities Manager application each time you computer is started up.

The third application pane option, "Prompt for initial Master Authentication", will cause the SpeedTools Utilities Manager to ask for the user to authenticate the application when its first started up. As long as the SpeedTools Utilities Manager stays running, no further authentication will be required.



Pre-Authentication Exception: Certain functions within the QuickBack component cannot be pre-authenticated. Therefore, you may be prompted for additional authentication while using Quickback, depending on the backup type selected.

The SpeedTools Internet Preference Pane

The “Internet” preference pane is accessed by clicking on the blue world icon as shown in Figure 7. It features three options. The first option, "Automatically Check For Updates" causes the SpeedTools Utilities Manager to check-in with the Intech web site to search for new or updated components each time the Manger is first launched.

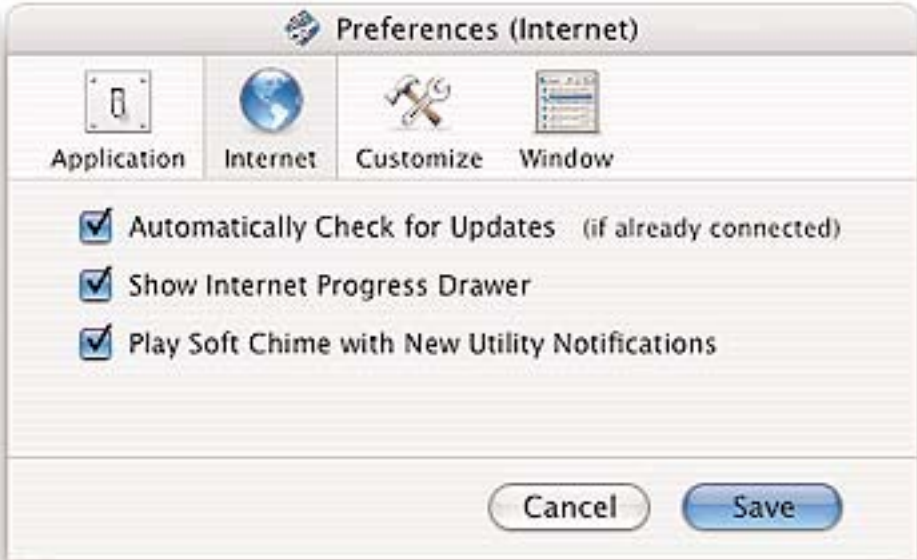


Figure 7. The SpeedTools “Internet” Preference Pane

The second option, "Show Internet Progress Drawer" will cause a small drawer window to appear showing you how far the check is progressing (See Figure 2 for illustration).

When this feature is disabled, Internet checking will continue to take place and the SpeedTools window will update any list item found with new information, but you will not see its progress via the drawer.

The third option, "Play Soft Chime with New Utility Notification" provides an audio indicator when a new component is available.

The SpeedTools Customize Preference Pane

The next preference pane called "Customized" is accessed by clicking on the small hammer and wrench icon as shown in Figure 8.



Note: This SpeedTools Manager feature is not available in OEM versions of the software. If you are unsure which version you have, note that current OEM versions clearly display the word "OEM" in the main window title bar.

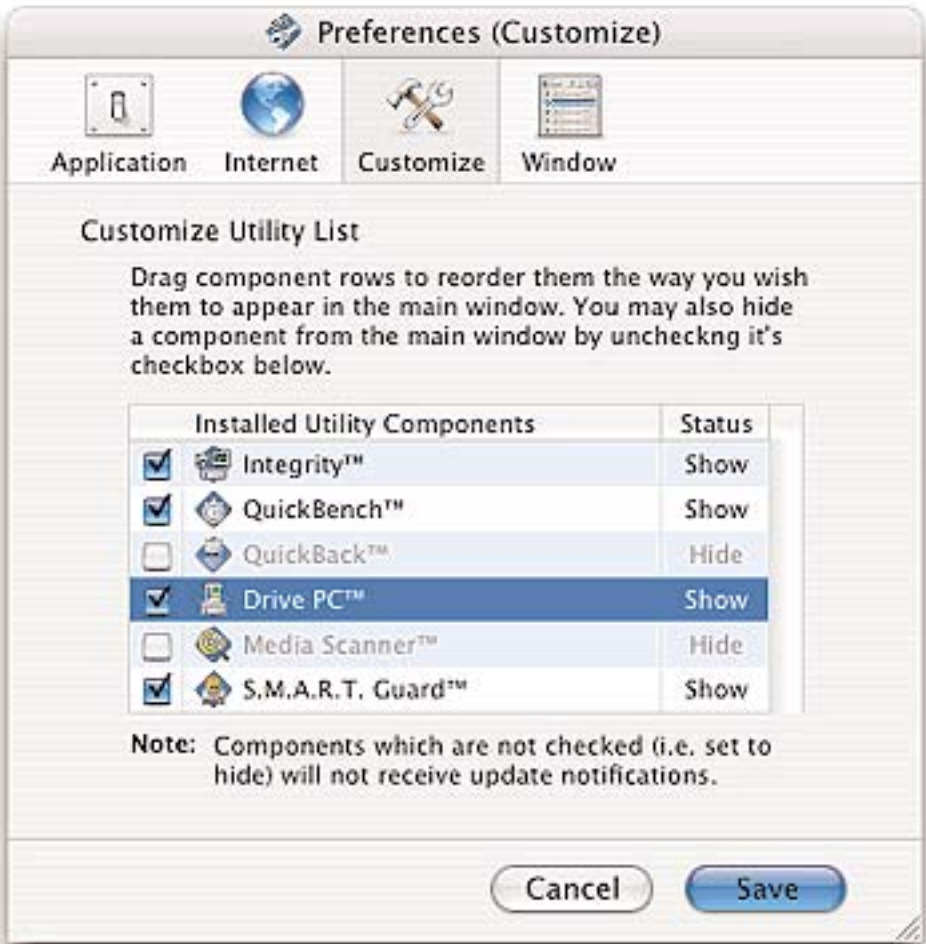


Figure 8. The SpeedTools "Customize" Preference Pane

The Customize Preference Pane provides two options for controlling the display of utility components in the main window. First, clicking on a checkbox to the left of any utility component line item changes the visibility of the respective utility component in the main window.



Note: Components which are not checked (i.e. set to hide) will not receive update notifications until after they are set to be shown again.

Second, you may also change the order in which utility components are displayed in the main window. To do this, simply drag any utility component list item to a new location in the list. While dragging a list item, a black horizontal line will appear in the list to help you visually identify the new location of the item upon release of the mouse button.

The SpeedTools Window Preference Pane

The last Preference Pane called “Window” is accessed by clicking on the small SpeedTools Manager window icon as shown in Figure 8.

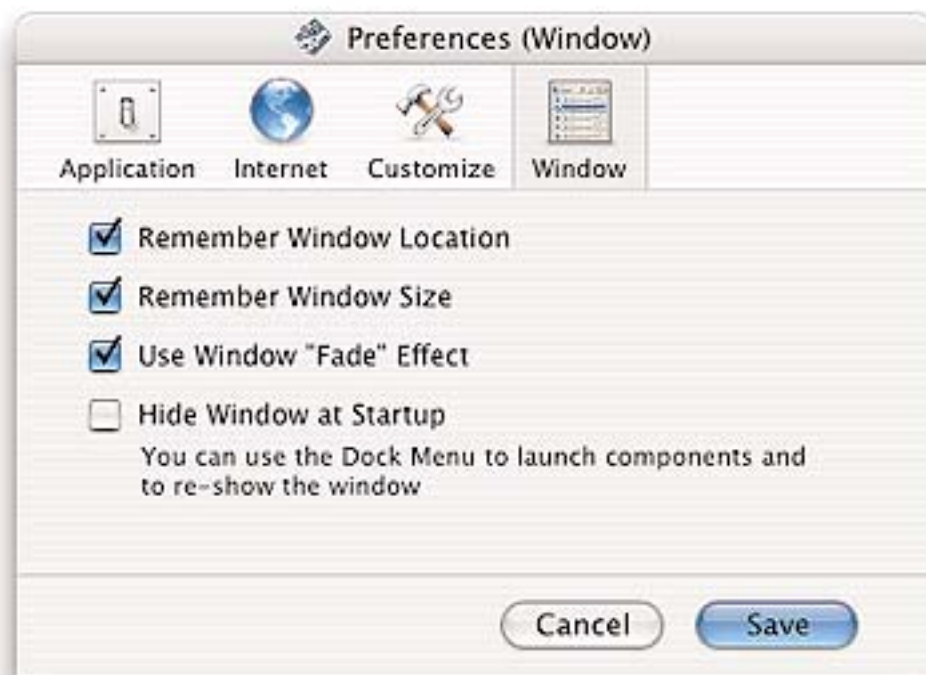


Figure 9. The SpeedTools “Window” Preference Pane

This preference pane features four options. The first option, "Remember Window Location" will cause the SpeedTools Utilities Manager, to upon launch, automatically reposition the main window at the same location it was on your screen when you last quit the Manager. When this option is disabled, the window will be centered on your primary monitor.

The second option, "Remember Window Size" will preserve the last used window size and list items displayed. When this feature is disabled, the window will show as many utility components possible relative to your monitor's size constraints.

The third option, "Use Window Fade Effect" will cause the main SpeedTools window to fade into view when starting up and fade out of view when quitting. This was a small and fun effect that we liked when we added it, but it may not be for everyone (particularly those with slower machines).

The last option in the Window preference pane, "Hide Window at Startup" will cause the SpeedTools Utilities Manager to launch in hidden mode allowing you to control launching utility components from the Dock menu. See Chapter 2 "Using the SpeedTools Dock Menu" for more information.