



Drive PC™

**Setup and partition drives with a Window® style disk format.
Devices setup with Drive PC can be used with both a
Macintosh and Windows-based computers.**

**Part of the Intech's SpeedTools™ Software
for MacOS™ X**

User's Guide



© 2003 Intech Software Corporation

Document Revision: 2.0

License Agreement

For One Computer

READ THE FOLLOWING SOFTWARE LICENSE AGREEMENT ("LICENSE") CAREFULLY, BEFORE YOU USE THE ACCOMPANYING SOFTWARE. BY INSTALLING OR USING THE SOFTWARE OR ANY OF THE MATERIALS ENCLOSED, YOU ARE AGREEING TO BE BOUND BY THE TERMS OF THIS LICENSE. IF YOU DO NOT WISH TO AGREE TO THE TERMS OF THIS LICENSE, (IF APPLICABLE) PROMPTLY RETURN THE UNUSED SOFTWARE TO THE PLACE WHERE YOU OBTAINED IT FOR A REFUND.

1. License. The software and documentation accompanying this License, known as the SpeedTools™ Utilities (Software), whether on disk, in read-only memory, or contained on any other media and the related documentation are licensed to you by Intech Software Corporation (Intech) and its Licensor(s). You own the disk on which the Software is recorded, but Intech retains title to the Software and related documentation. This license allows you to use the Software on a single computer and make one copy of the Software retained by you for backup purposes only. You may transfer your license rights of the Software and related documentation, the Software backup copy which you may have made, and a copy of this license to another person, provided the other person agrees to accept the terms of this license after reading its complete text and conditions.

2. Restrictions. You may not, in whole or part, copy, photocopy, reproduce, translate, reverse compile, disassemble, reverse engineer, reduce to any electronic or machine-readable form, or otherwise reduce to a human perceivable form (except for a backup copy, as stated in paragraph 1), the Software or related documentation without the prior written consent of Intech. You may not change, rent, lease, loan, distribute or create derivative works based upon the Software in any form, in whole or in part. This prohibition includes transmission of the Software over a network from one computer to another. THIS SOFTWARE IS NOT INTENDED FOR USE IN THE OPERATION OF NUCLEAR FACILITIES, AIRCRAFT NAVIGATION, COMMUNICATION SYSTEMS, OR AIR TRAFFIC CONTROL MACHINES IN WHICH CASE THE FAILURE OF THE SOFTWARE COULD LEAD TO DEATH, PERSONAL INJURY, OR SEVERE PHYSICAL OR ENVIRONMENTAL DAMAGE. Your rights under this License will terminate automatically without notice if you fail to comply with any term(s) of this License.

3. Service or Support. By using the Software and agreeing to this license, you understand and agree that Intech may not offer you any technical support regarding use of the Software or related products. Intech reserves the right to revise the Software and documentation without obligation to notify any person or organization of any such changes or revisions.

4. Warranty Disclaimer. By using the Software and agreeing to this license, you expressly acknowledge and agree that use of the Software is at your sole risk. The Software and related documentation are provided "AS IS" and without warranty of any kind. INTECH EXPRESSLY DISCLAIMS ALL WARRANTIES, EXPRESSED OR IMPLIED, INCLUDING, BUT NOT LIMITED TO, THE IMPLIED WARRANTIES OF MERCHANTABILITY AND FITNESS FOR A PARTICULAR PURPOSE. INTECH DOES NOT WARRANT THAT THE FUNCTIONS CONTAINED IN THE SOFTWARE WILL MEET YOUR REQUIREMENTS, OR THAT THE OPERATION OF THE SOFTWARE WILL BE UNINTERRUPTED OR ERROR-FREE, OR THAT DEFECTS IN THE SOFTWARE OR RELATED DOCUMENTATION WILL BE CORRECTED. NO ORAL OR WRITTEN STATEMENTS OR INFORMATION OR ADVICE PROVIDED BY A INTECH REPRESENTATIVE SHALL ESTABLISH A WARRANTY OR EXPAND THE SCOPE OR TERMS OF THIS WARRANTY. IF THE SOFTWARE IS

DEFECTIVE, YOU WILL BE RESPONSIBLE FOR THE COST OF ALL NECESSARY SERVICING, REPAIRS, OR CORRECTIONS. Some jurisdictions do not allow for exclusion of implied warranties, so the above exclusion may not apply to you. The Software may not work properly with modified versions of your computers operating system, certain resident software applications, or hardware that is not 100% compatible with that provided by the computers manufacturer.

5. Limited Warranty Regarding Media. Intech warrants that the diskette(s) on which the Software are recorded shall be free from defects in materials and workmanship under normal use for a period of ninety (90) days from the date of your purchase of the Software, as established by your receipt. Intech's entire liability, as well as your sole and exclusive remedy, will be replacement of the diskette(s) which are defective. The diskette(s) must be returned to Intech with a copy of your receipt. This warranty does not include diskette(s) damaged by accident, abuse, or misapplication. ANY IMPLIED WARRANTIES ON THE DISKETTE(S) ARE LIMITED TO A PERIOD OF NINETY (90) DAYS FROM THE DATE OF DELIVERY TO YOU. THIS LIMITATION INCLUDES IMPLIED WARRANTIES SUCH AS THE IMPLIED WARRANTIES OF MERCHANTABILITY AND FITNESS FOR A PARTICULAR PURPOSE. This warranty gives you specific legal rights, and you may also have other rights which vary from state to state.

6. Limitation on Liability. IN NO EVENT WILL INTECH BE LIABLE TO YOU FOR DIRECT, INDIRECT, SPECIAL, INCIDENTAL, OR CONSEQUENTIAL DAMAGES ARISING FROM YOUR USE OR INABILITY TO USE THE SOFTWARE OR RELATED DOCUMENTATION, EVEN IF INTECH HAS BEEN ADVISED OF THE POSSIBILITY OF SUCH DAMAGES. INTECH SHALL HAVE NO LIABILITY FOR ANY HARDWARE, SOFTWARE OR DATA STORED OR USED IN CONJUNCTION WITH THE SOFTWARE, INCLUDING THE COSTS OF REPAIRING, REPLACING, OR RECOVERING SUCH HARDWARE, SOFTWARE OR DATA. Under no circumstances shall Intech's total liability to you for all damages, losses, and causes of action (whether in contract, tort (including negligence) or otherwise) exceed the amount paid by you to obtain the Software and related documentation.

7. Severability. Should a court of competent jurisdiction declare this license agreement, or any portion of this license agreement, to be unenforceable, that portion shall be enforced to the maximum extent possible so as to effectuate the intent of the parties, and the remainder of the agreement shall continue in full force and effect.

8. Complete Agreement. This license constitutes the entire agreement among the parties regarding the use of the Software and related documentation. This license agreement replaces and supersedes any prior understandings or agreements, whether oral or written. No contemporaneous understandings or agreements were entered into in conjunction with this license agreement. No change to this licensing agreement will be effective against Intech unless it is in writing and signed by an authorized representative of Intech Software Corporation.

© Copyright 1994-2003 by Intech Software Corporation. All rights reserved worldwide, including those to reproduce, modify and/or distribute this document or part thereof, in any form without prior written consent from Intech Software Corporation.

Apple, the Apple Logo, AppleShare, Finder, MultiFinder, Macintosh, Power Macintosh, MacOS and PowerBook are trademarks or registered trademarks of Apple Computer, Inc. CD-ROM SpeedTools, CD/DVD SpeedTools, Hard Disk SpeedTools, Backup SpeedTools, PeripheralView, Cache Monitor, QwikInstall, Integrity, IntegrityX, QuickBench, QuickBenchX, DrivePC, DeviceTuner, QuickBack and the Intech Logo are trademarks or registered trademarks of Intech Software Corporation. All other brand and product names contained in the software and related documentation were used in an editorial fashion only and are the trademarks or registered trademarks of their respective holders.

Table of Contents

- 1 . Guide Introduction 1**
 - About this Guide 1
 - Conventions Used in this Guide 1
 - User Registration 1
 - Technical Information 1

- 2 . Using the Drive PC Utility 2**
 - About Drive PC 2
 - Describing the Drive PC Main Window 3
 - The Info Button 3
 - The Unmount Button 3
 - The Mount Button 3
 - The Setup Button 3
 - Using Drive PC 3
 - Drive PC System Requirements 4



Guide Introduction

About This Guide

The instructions and explanations in this guide assume that you understand how to operate your Macintosh computer. You should, for example, know how to choose, select, launch, and drag by using your mouse. In addition, you should also understand how the desktop, windows, dialog boxes, buttons and file/folders work within the Macintosh environment. For more information about these items, please refer to your Macintosh User's Guide.

Conventions Used In This Guide



Note: This symbol calls your attention to important information about the adjacent text. A note will always appear in standard print.



Warning: This symbol calls your attention to procedures in the adjacent text which can cause harm to you, your data or computer system. A warning will always appear in bold print.

User Registration

Please take a moment to register your copy of the SpeedTools™ software on-line via the Intech Software World Wide Web page at <http://www.SpeedTools.com>.

Technical Information

If you received this software with the purchase of a drive subsystem and you require technical support, Intech has made special arrangements with your drive manufacturer to support this software directly via their technical support department. For customers who have purchased this software product as stand-alone, Intech provides technical information and other late-breaking information via its web site at <http://www.SpeedTools.com>.

2

Using the Drive PC™ Utility

About Drive PC

Intech's Drive PC is designed to format FireWire and USB drives for use with both Macintosh and Microsoft Windows based computers. This is accomplished by writing PC-style partition maps on the drive and creating PC file directories on the partition volumes. Since both Classic MacOS and MacOS X can read and write to PC formatted drives, drives formatted in this way can be easily moved and connected back and forth between a variety of computers running MacOS, as well as Windows versions 95b, 98, 98SE, Me, NT, 2000 and XP.

Furthermore, as of this document's creation, all MacOS X versions through 10.2.6 cannot mount PC formatted volumes which are larger than 128 GB. Drive PC allows you to circumvent this limitation on drives greater than 128 GB by partitioning them into two or more smaller volumes.

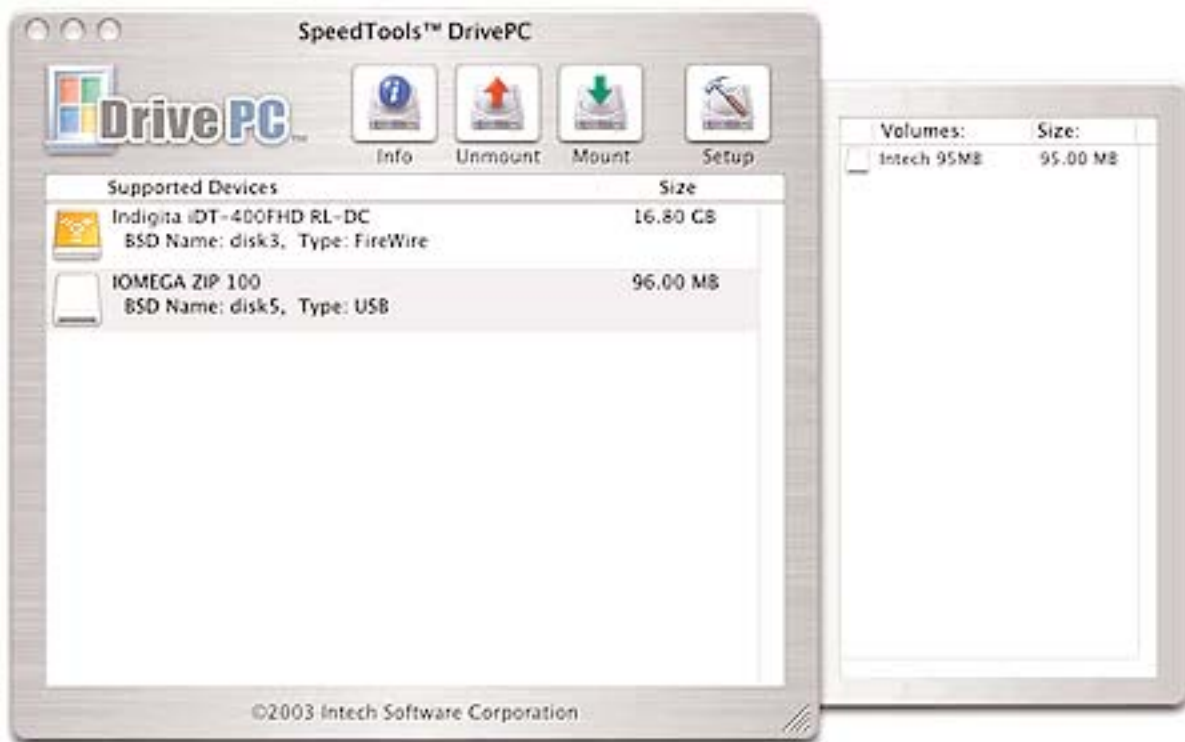


Figure 1. The Drive PC Main Window

Describing the Drive PC Main Window

When Drive PC is launched, all supported USB, FireWire and removable media drives will be displayed in the main window as shown in the previous illustration. To select a device for PC setup, click once on the device's icon or name within the presented list. Afterwards, a blue highlight bar will be presented over the listed device to indicate your selection.

The Info Button: If a device is selected, the Info button will provide current volume information about the device. It will do this with an additional "Drawer-style" window which will be presented on the side of Drive PC's main window. You can use this volume information to better identify a candidate drive. To close the Info window, click the "Info" button again.

The Unmount Button: If a device is selected, clicking the Unmount will remove the device from your desktop (preventing access to it) until you restart your computer or use the Mount button in Drive PC to remount the device.

The Mount Button: If a device is selected, and if the device has a valid partition map, clicking the Mount button will mount the device making it accessible from the Finder.

The Setup Button: Use this button to erase and prepare a device with a Windows® compatible file system. Please see the following sections for additional information about this function.

Using Drive PC

To select a drive for setup, simply click once on its location in the list. Next, click the "Setup" button. If the drive capacity is less than 128 GB, a formatting options window like the one shown in the following illustration will be presented.

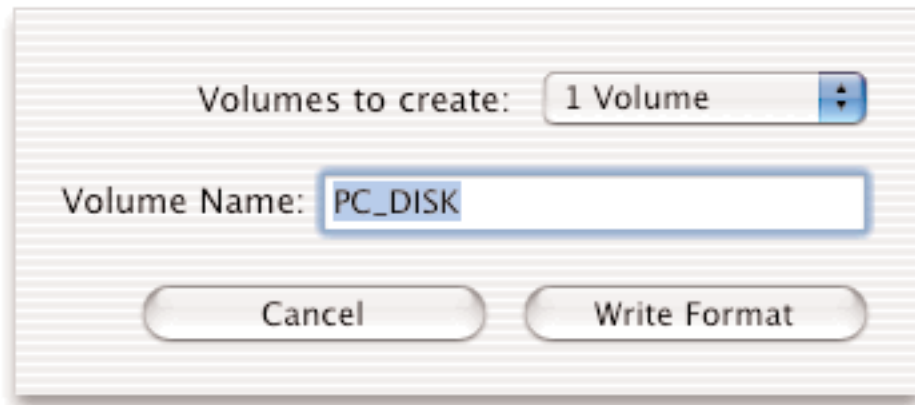


Figure 2. Formatting Options for drive less than 128GB

In this window you can give your new volume(s) a name and select the number of volume(s) (using the popup menu) you would like created in the partition map. Click "Write Format" to save your changes to the disk. Otherwise, click the "Cancel" button to leave your disk untouched.



Warning: The Setup Button will erase all data on the selected disk device. Please make a back copy of all your important data and use this feature with caution.



Note: For maximum compatibility, Drive PC will not provide the ability to select multiple partitions for removable disk drives such as Zip®, Syquest® and Magneto Optical devices. For these device types, Drive PC will automatically allocate all available space to a single PC file system.



Note: If the selected device is larger than 128 GB in capacity, an additional message will be included in the Formatting Options window. This message informs you of the over 128 GB issue on MacOS X as explained earlier. Additionally, the Create Volume popup menu will be automatically defaulted to the fewest number of volumes required to keep each volume below 128 GB in size.

Drive PC System Requirements:

- MacOS X 10.2 or later
- A USB, FireWire or Removable Media disk device